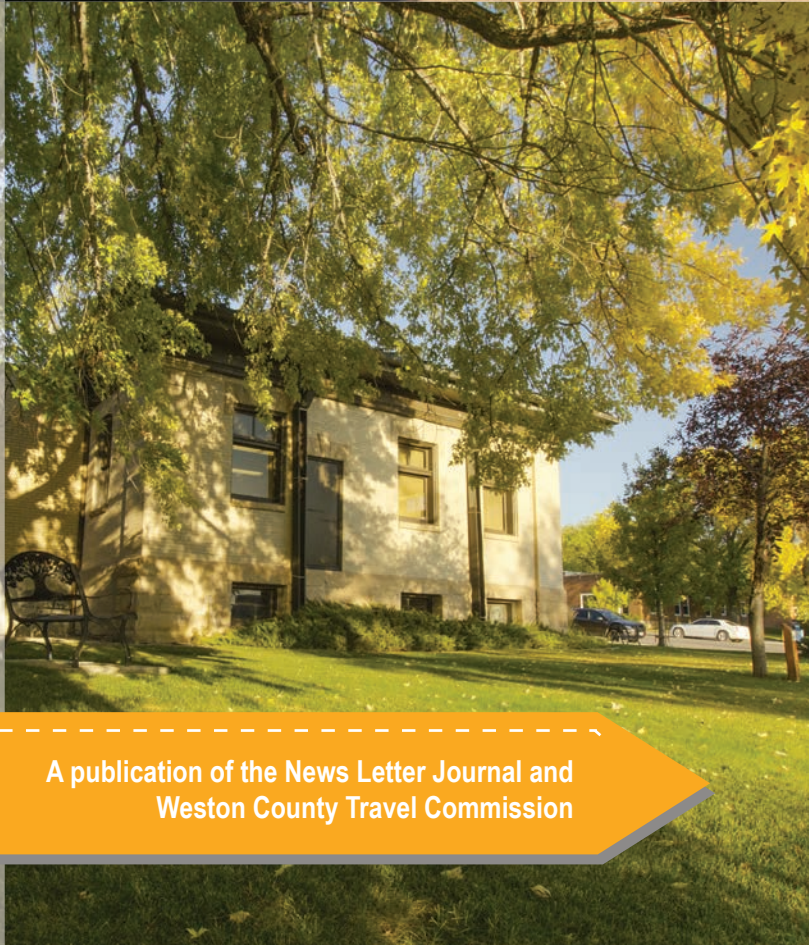
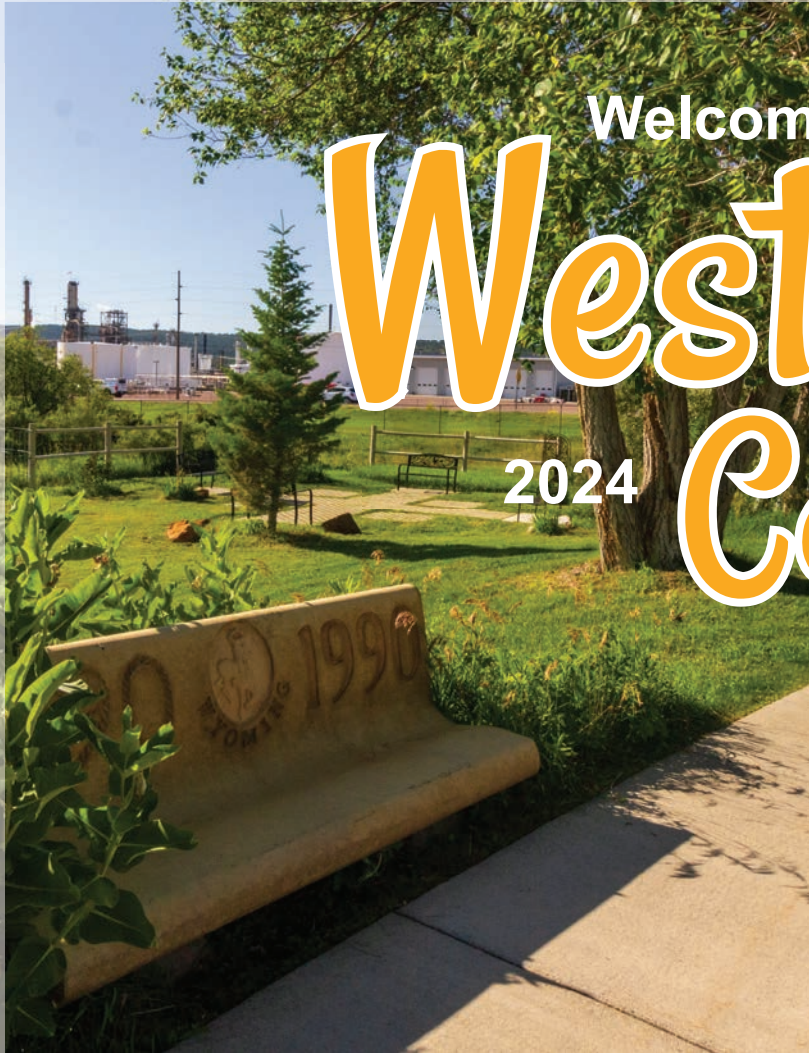


Welcome to

Weston County

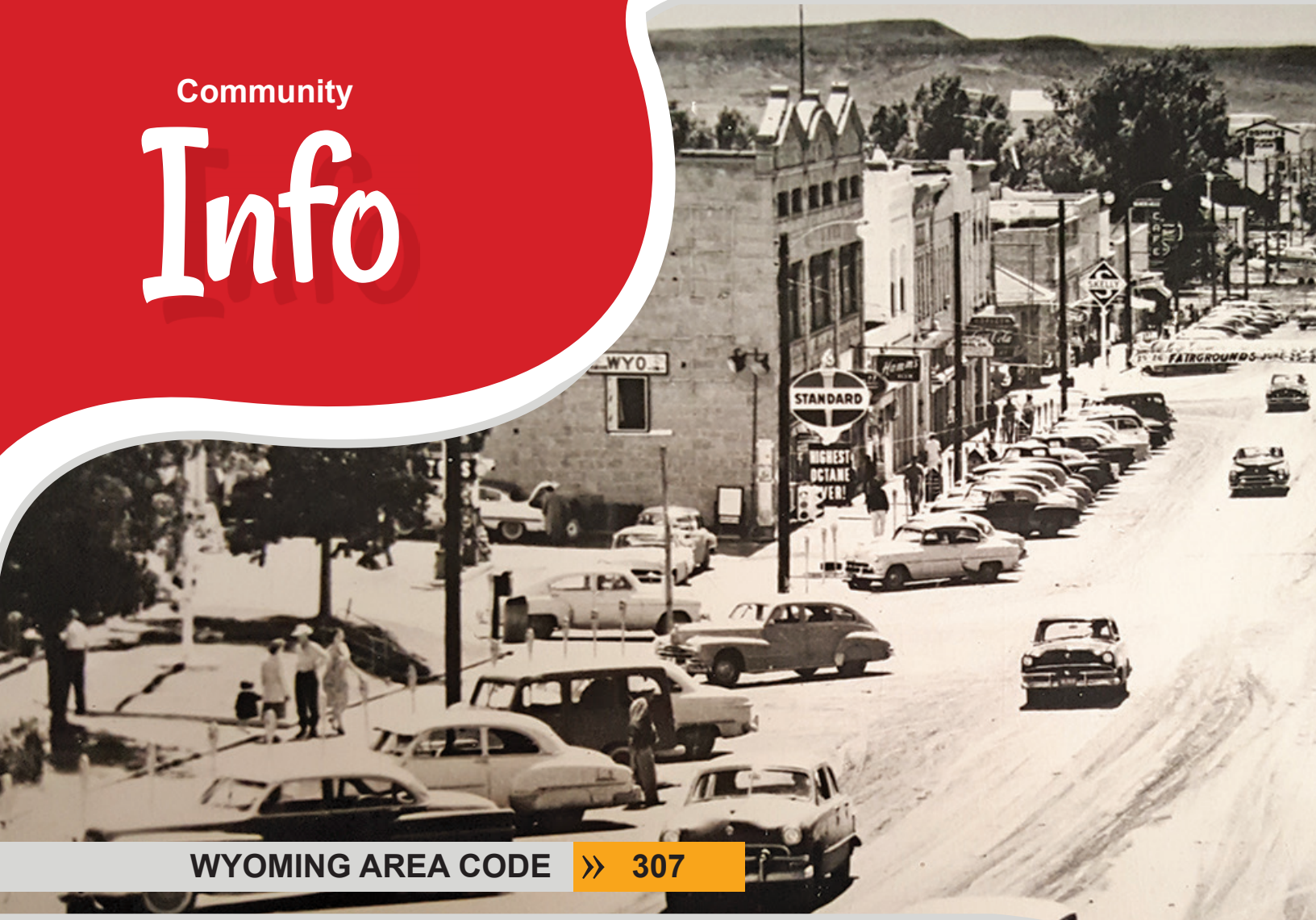
2024



A publication of the News Letter Journal and
Weston County Travel Commission

Community

Info



WYOMING AREA CODE >> 307

MEDICAL/FIRE/POLICE 911

- **AMBULANCE** – Non-emergencies: Newcastle Ambulance Service, 7 W. Wentworth St., Newcastle 746-2800; Osage 746-4486; Upton 468-2825
- **FIRE DEPARTMENTS** – Non-emergencies: Newcastle 746-4506, Osage Fire Hall, 463 Nefsy Ave., 465-2445; Upton 468-2825; Highlands Volunteer Fire Dept., 25612 Dewey Rd., East Newcastle, 605-749-2223
- **WESTON COUNTY FIRE PROTECTION DISTRICT** – 3166 W. Main St., 746-2031
- **SHERIFF** – Non-emergencies: Newcastle, 25 N. Sumner Ave., Newcastle/Osage 746-4486; Upton 468-2475
- **POISON CONTROL** – 800-222-1222
- **HOSPITAL** – Weston County Health Services, 1124 Washington Blvd., Newcastle 746-4491

WESTON COUNTY COMMERCE

- **NEWCASTLE AREA CHAMBER OF COMMERCE:** 1323 Washington Blvd., Newcastle 746-2739, nacoc@rtconnect.net
- **UPTON CHAMBER OF COMMERCE:** Upton 468-2441, Uptonchamberofcommerce@gmail.com

WESTON COUNTY MUSEUMS

- **ANNA MILLER MUSEUM:** 401 Delaware Ave., Newcastle 746-4188
- **UPTON RED ONION MUSEUM:** 1920 Hwy. 16 (Old Town), Upton 307-226-2873

GOVERNMENT

- **Bureau of Land Management,** 1101 Washington Blvd., Newcastle, 746-6600
- **City of Newcastle,** clerk@cityofnewcastle.org, 10 W. Warwick, Newcastle, 746-3535: Water, sewer, trash
- **Game Warden,** 48 Musser Rd., Newcastle, 746-2248
- **Hell Canyon Ranger District,** Black Hills National Forest, 1225 Washington Blvd., Newcastle, 746-2782: Maps, information
- **Jewel Cave National Monument,** 11149 U.S. Hwy. 16, Bldg. B12, Custer, South Dakota, 605-673-8300
- **Newcastle Police Department,** 30 N. Summit Ave., Newcastle, 746-4486, Emergency: 911
- **Weston County Commissioners,** 1 W. Main St., Newcastle, 746-2684, westongov.com
- **Weston County Sheriff,** Newcastle, 746-4441, sheriff@westongov.com
- **Weston County Travel Commission,** Box 655, Newcastle, WY, 82701, wideopenweston.com
- **Weston County Natural Resource District,** 1225 Washington Blvd., Newcastle, 746-3264
- **Wyoming Game & Fish Biologist,** 24 S. Seneca, Newcastle, 746-4646

Weston County Welcome Guide ©2024





Welcome to *Wide Open* Weston! Wyoming

The Weston County Travel Commission and the News Letter Journal welcome you to explore Weston County! The 2024 Weston County Welcome Guide provides a wealth of information to make your visit more enjoyable in the northeast corner of Wyoming/southern Black Hills. Whether you are already here, or using this guide to plan your visit, there's a plethora of information within these pages to direct you to all that Weston County has to offer.

Known as "The Cowboy State," Wyoming is home to wide open spaces, and rich western heritage. Our residents are an independent lot, in a place where neighbors still help neighbors, and you can catch cowboys and cowgirls on horseback either working cattle or competing at rodeo.



Visitors have plenty to see in Weston County, which is comprised of the city of Newcastle and the towns of Osage and Upton — with miles of beautiful country all around. For instance, in the one-stoplight city of Newcastle, you'll find an historic downtown listed on the National Register of Historic Places that boasts a nostalgic courthouse, post office, library and additional buildings made of local sandstone. Check out Main Street's murals, movie theater, and variety of shops.

Venturing farther, there are museums, historic loop driving tours, bike and hiking trails, hunting, fishing, camping and a vast amount of public land to peruse.

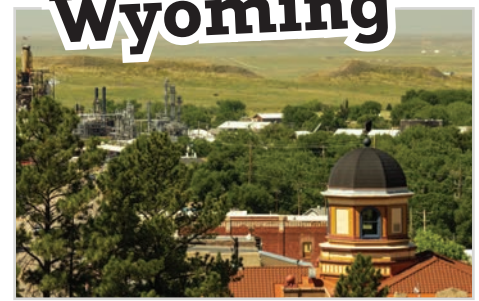
Heading west to Osage, there's fishing available at the Black Hills Power and Light dam, right before the Osage turnoff. West of Osage, you will see a sign announcing the Thunder Basin National Grasslands, which comprises more than a half million acres of public land. Just beyond that is the turnoff at Clayspur/Baroid Road, which will lead you into the back country for the Prairie to Pines Loop Tour — get your brochure from the Newcastle Visitors' Center or either the Anna Miller Museum in Newcastle or the Red Onion Museum in Upton.

Staying on Highway 16 and heading west for another 17 miles will take you to the town of Upton, which was first known as Irontown, named after Iron Creek. The town's motto is "Best Town on Earth," where you will find the Red Onion Museum and the restored village of Old Town, reconstructed on the original site of Irontown. The museum holds many historic treasures including a two-headed calf — yes, you read this correctly, so be sure to make a trek just to see this wonder among the many displays including an historic wagon collection!

Be sure to check out the town's businesses, where you can fill up the tank, your gift list, or your stomach. Upton boasts a new hotel this year, Iron Creek Inn & Suites, for visitors who need overnight accommodations and more time to explore the area. Take a picture in front of one of the town's three murals, which are the perfect backdrop to capture a keepsake memory.

Upton is also known for hosting the Inyan Kara Enduro, part of the Rocky Mountain Enduro circuit. This nationally sanctioned event draws dirt bike enthusiasts from across the nation as riders compete in youth to over-the-hill classes. Enduros are one of the oldest forms of motorcycle competition and the Inyan Kara race offers a challenging course that includes wooded and desert terrain within the Thunder Basin National Grasslands. You won't want to miss this year's enduro, on Sept. 21-22.

Weston County offers many types of ac-



commodations to fit your family or group's stay, including modern family hotels, remote cabins, cozy bed and breakfasts, roadside motels and secluded campgrounds. All are welcoming and designed for a comfortable, relaxing visit.

There's a definite buzz in Weston County that begins toward the end of July and into August, as bikers attend the Sturgis Motorcycle Rally, held annually in nearby Sturgis, South Dakota. Weston County is conveniently located less than an hour's drive from Sturgis and many bikers prefer less congestion, wide open spaces and our beautiful scenery as a place to make their home base. This year's 84th Anniversary rally is Friday, Aug. 2, to Sunday, Aug. 11.

While you are here, visit local businesses advertised in this publication to find the best places to grab a bite to eat or a drink, get cash, pick up supplies, or find a gift to take back home — our friendly merchants will be happy to assist you!

If you are vacationing close to home, we invite you to become a hometown tourist and experience the historic sites, tours and trails that others drive many miles to visit. Dust off the hiking boots, fishing poles, and get out and enjoy Weston County!

The Weston County Hotel Guide is brought to you by the News Letter Journal and the Weston County Travel Commission. All rights reserved. Copyright 2024.

•••

Photos courtesy of Weston County Travel Commission, Nicky Groenewold, Leonard Cash, Jan Farella, Makayla Scott, Weston County Museum District, Amy Menerey/Lost Cabin Photo, and News Letter Journal Staff.

Weston County Events



Find out about these events & more:
newcastlewyo.com, uptonwy.com,
wideopenweston.com
 and the News Letter Journal

Join the fun! >>

- **May 31–June 2:** RPM Days (Racing, Power, Mud), Weston County Fairgrounds
- **June 1:** Pancake Breakfast. 8-9:30AM, First Northern Bank of WY
- **June 1-2:** Cambria Bowhunters Extreme Shoot
- **June 7-9:** Upton Community Yard Sale
- **June 9:** Anna Miller Museum Historic Fashion Revue Tea, Newcastle
- **June–August:** Gymkhanas and Rodeos, Weston County Fairgrounds
- **June–September:** Thursdays, 5-7PM Farmers' Market, Newcastle Lodge
- **July 12:** Warm Summer Nights, Kim & The Classics, Downtown Newcastle
- **July 19–21:** Upton Fun Days: Parade, contests, events, concessions and more!
- **July 20–28:** Weston County Fair, Weston County Fairgrounds
- **July 21:** 3PM Pig Wrestling, Weston County Fairgrounds
- **Aug. 9–11:** Cambria Bowhunters hosts WSAA State Outdoor 3D Shoot
- **Aug. 16:** Warm Summer Nights & Chokeycherry Festival, Captain Pancake, Downtown Newcastle
- **Aug. 31:** Madness on Main, Downtown Newcastle



- **Sept. 7:** Carson Rose Memorial Car Show & Fall Festival, City Park, Upton
- **Sept. 21–22:** 30th Annual Inyan Kara Riders (National) Enduro, Upton
- **Sept. 21:** Newcastle Annual Fall Festival and Newcastle Shine & Show, Dow Park, Newcastle
- **Sept. 21:** Warm Summer Nights: Songwriter & Poet Showcase, Weston County Senior Services Center, Newcastle
- **December:** Upton Community Christmas Kickoff
- **December:** Parade of Lights, Downtown Newcastle



All dates are approximate and subject to change. Please check chamber website, newsj.com, and local newspaper for more information.

*On the road
or on the go ...*





*We've got
you covered*

Newcastle's only Drive-Thru ATM
CONVENIENT • COVERED • LOW FEE
Located at the corner of U.S. Highways 16 & 85

 **Pinnacle Bank**

THE WAY BANKING SHOULD BE

  wypinnbank.com

 MEMBER FDIC



**SUNDOWNER
INN**

Offering travelers, vacationers and
workers a clean, comfortable place to stay
for over 100 years!
Off-street parking and free breakfast



Pictured is one of our King Rooms

Call us at 307-746-3344 or visit our
website at sundownerinn.net
to book your stay.

451 W. Main St., Newcastle, WY

Ad paid for in part by Weston County Travel Commission

 **CALL TO PLACE ORDER, WE DELIVER!**
We've got your fresh!

COLD PRESS JUICE: 8 oz. \$7.15 12 oz. \$10.25
Ginger Pineapple Orange Celery Honey
Orange Ginger Honey
Pure Orange
Pure Carrot
Watermelon Honey

INFUSIONS: 8 oz. \$5.30 12 oz. \$8.15
Purple Corn, Apple Cinnamon, Raw Honey
Apple, Turmeric, Lemon, Cinnamon, Raw Honey

SALAD: \$7.50
Organic Fresh Greens, Tomato & Carrots With Cranberry Nuts
Mix. Homemade Honey Mustard Dressing Or Ajillo Dressing,
made fresh. (Homemade Ranch Dressing When Available)

POTATO LOVERS BREAKFAST BURRITO: \$7.00
Homemade Burrito With Fresh Crack 3 Blend Pepper, A Bit Of
Hot Sauce, Red Onion Potato, Egg, Parsley & Cheese

BASIL SPINACH SAUCE: \$10.00
Homemade Pesto Sauce Frozen (Garlic, Onion, Spinach, Basil,
Pepper, Milk, Extra Virgin Olive Oil And Salt) 12 oz.

DESSERT: \$6.00
Chocolate Mousse, Dairy & Gluten Free

Yasmin C. Frank (307) 941-1923
Brice Birkley (307) 941-2190

Check out our booth at the
weekly Farmers' Market on
Thursdays, Newcastle Lodge &
Convention Center Parking Lot



Ad paid for in part by Weston County Travel Commission

Newcastle Country Club

9-Hole Public Golf Course | Driving Range
Cart & Club Rentals | Bar & Grill
Indoor Simulator

OPEN EVERY DAY!

CHECK US OUT FOR
LUNCH OR DINNER!
BAR & GRILL OPEN
TO PUBLIC



Book a Tee Time online!
newcastlecountryclub.com

WYOMING SKILL GAMES

2302 W. Main St., Newcastle WY
(307) 746-2639

Email: ncc@rtconnect.net

Ad paid for in part by Weston County Travel Commission

Parks

& Recreation

Have a picnic!



Enjoy our great outdoors >>

LOCAL PARKS

Newcastle

- **Dow Park:** Off West Main, between 4th Ave. & Forest Hill Way; playground equipment, picnic tables, trees & shade, RV dump area, basketball hoops, public restroom
- **Centennial Park:** Off U.S. Hwy. 16 Bypass; playground equipment, basketball hoops, public restroom, picnic shelter & tables, on bike path
- **Washington Park:** Off U.S. Hwy. 16, Delaware St.; covered picnic areas with tables, skateboard park, trees & shade
- **Railroad Park:** Downtown, next to the railroad tracks; near the train depot, picnic tables, swings, informative plaques about train history
- **Girl Scout Park:** Along West Main, across from Woody's Food Center; picnic tables & benches
- **Roby Park:** 3334 Latigo; basketball hoops, picnic tables & benches
- **Baseball & Soccer Fields:** Off Birch St.

Upton

- **Upton City Park:** Off U.S. Hwy. 116 & Kellogg St.; large wooded park, playground equipment, picnic tables & shelters, trees & shade, pavilion, horseshoe pits, basketball hoops, public restrooms, walking trail
- **Schiller Baseball Complex:** 401 2nd St.
- **Basketball Court:** Off U.S. Hwy. 116
- **Upton Swimming Pool:** 802 Willow St., 307-468-2850



AREA NATIONAL PARKS

- **Badlands National Park:** 80 miles southeast of Rapid City, SD, 605-433-5361, nps.gov/badl
- **Devils Tower National Monument:** 73 miles northwest of Newcastle via Hwy. 85 & 14 or 80 miles via Hwy 16 & 14, 307-467-5283, nps.gov/deto
- **Jewel Cave National Monument:** 14 miles east of Newcastle on U.S. Hwy. 16, 605-673-8300, nps.gov/jeca
- **Minuteman Missile National Historic Site:** 75 miles east of Rapid City (I-90, exit 131) on Hwy. 240, 605-433-5552, nps.gov/mimi
- **Mount Rushmore National Memorial:** 3 miles southwest of Keystone via U.S. Hwy. 16 & Hwy. 244, 605-574-2523, nps.gov/moru
- **Wind Cave National Park:** 3 miles north of Hot Springs on Hwy. 385, 605-745-4600, nps.gov/wica

NEARBY STATE PARKS:

South Dakota

- **Bear Butte State Park:** 6 miles northeast of Sturgis off Hwy. 79, 605-347-5240, gfp.sd.gov/parks/detail/bear-butte-state-park/
- **Custer State Park:** 7 miles east of Custer, 605-255-4515, gfp.sd.gov/parks/detail/custer-state-park/
- **Roughlock Falls Nature Area:** 1 mile west of Scenic Byway at Savoy on FDR 222, 605-584-3896, gfp.sd.gov/parks/detail/spearfish-canyon-nature-area

Wyoming

- **Keyhole State Park:** On the western edge of the Black Hills, between Sundance and Moorcroft, 307-756-3596. Easily accessed off I-90 at exit 165. Travel north 6 miles and the entrance to Park Headquarters will be on your left. wyparks.state.wy.us/index.php/places-to-go/keyhole.

"There's No Place Like Home Place"



Kacy Botkin
307-941-2575
kacybotkinrealtor@gmail.com

Real Estate Agent Kacy Botkin is local to the area and can help you with all your real estate needs.



Home Place Realty 2891 W. Main St.

INFORMATION!
we've got it

Newcastle Visitors' Center

Welcome to Weston County!

- MAPS
- PARKS
- EVENTS
- HISTORY
- LODGING
- DIRECTIONS
- MUSEUMS
- ATTRACTIONS
- RESTAURANTS
- HIKING TRAILS
- WIFI LOCATIONS
- LOCAL SHOPPING



(307) 746-2739

nacoc@rtconnect.net

newcastlewyo.com

West of intersection

U.S. Hwys. 16 & 85

1323 Washington Blvd.,

Newcastle WY 82701



Ad paid for in part by Weston County Travel Commission

PERKINS TAVERN

THE LOCAL TAVERN WHERE EVERYONE IS WELCOME

114 W. Main St., Newcastle WY • 746-3382

*Ask about our Daily Weekday
Specials and House Shots.*

**MICRO BREWS FROM
WYOMING ON-TAP:
Black Tooth Brewery**

**TAP BEER:
Domestic/Micro**

**WELL LIQUOR:
Multiple Choices!**

**SUNDAY FUNDAY:
Free Pool & Darts**

Kitchen:

*Open
seasonally.
Call for Specials*



Weston County Welcome Guide ©2024

BEST BLOODY MARY IN THE BLACK HILLS!

Recreate

Explore with us!



Get out & play!

Outdoor opportunities >>

GEOCACHING:

- Throughout the area!
Start hunting today

GOLF:

- **Newcastle Country Club:**
9-hole, 2302 W. Main,
Newcastle, 307-746-2639
- **Cedar Pines Golf Club:**
9-hole, 2579 Hwy. 116, Upton,
307-468-2847



FISHING/SWIMMING:

- **LAK Reservoir:** 5 mi. east of Newcastle on U.S. Hwy. 16; left onto Beaver Creek Rd., 1.5 mi. (*Swimming and non-motorized usage*)
- **Turner Reservoir:** From Osage, right on County Road 14; 6 miles then left on Forest Road 914.
- **Black Elk Pond:** Access at Newcastle Country Club, 2302 W. Main St., Newcastle WY

TRAILS:

- **Flying V:** 17-plus mile for bike & hike, 8.25 mi. north of Newcastle on U.S. Hwy. 85
- **Mallo Trail (BLM):** 18 mi. north of Newcastle on U.S. Hwy. 85; right at Mallo Road; 4 mi. to Mallo Camp & trailhead is approx. 1 mile east
- **Serenity:** 2-mile or 4-mile, 2.7 mi. north of Newcastle on U.S. Hwy. 85
- **Old Quarry:** 5 miles of trails, 8 mi. east of Newcastle, on U.S. Hwy. 16
- **Scenic Walking Tour:** Guide books at Anna Miller Museum
- **Beaver Creek Cross Country Ski Area:** 22 miles north of Newcastle on Mallo Camp Road. Approx. 13 miles of trails, easy to difficult skill level. Trails are not groomed

NEARBY ATTRACTIONS

- **Hell Canyon:** Hiking trails, east of Newcastle, fs.usda.gov
- **Jewel Cave:** Over 200 miles of underground passages plus overland hiking, Custer, South Dakota. 605-673-8300; tour and info at nps.gov/jeca
- **Crazy Horse Memorial:** Hwy 16, northeast of Newcastle, 6.9 mi. north of Custer, 605-673-4681, crazyhorse.org
- **Black Hills Institute of Geological Research:** Hill City South Dakota, 605-574-4289, bhigr.com
- **George S. Mickelson Trail:** Trailhead - Lead, South Dakota, 605-584-3896, mickelsontrail.com
- **Sanford Lab Homestake Visitor Center:** Lead, South Dakota, 605-584-3110, sanfordlabhomestake.com
- **South Dakota Air & Space Museum:** I-90 Exit 67, (east of Rapid City), 605-385-5189
- **Mammoth Site:** Museum/palaeontological site, Hot Springs South Dakota., 605-745-6017

THE LAUNDRY BASKET

JENN AND JUSTIN KOLBECK
(307) 680-1383 & (605) 760-3281

**OPEN
24/7**



WHERE IT'S OKAY TO SUDS YOUR DUDS!

1515 W. Main St., Newcastle

Anna Miller
* MUSEUM *
NEWCASTLE, WYOMING

A place where you can walk
back in time and relive
The Old West

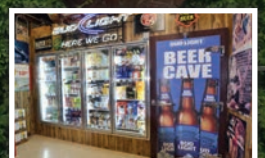
Exhibits include artifacts of early
coal mining, fossils, early
ranch life and much more!



Included within the Anna
Miller Museum Complex are
the Green Mountain School,
a homesteader's cabin, and
the Jenney Stockade cabin
— the oldest existing
building of the Black
Hills Gold Rush!

401 Delaware, off Hwy. 16 in Newcastle, WY
(307) 746-4188 | email: wcmd@rtconnect.net

**Largest Selection of Liquor
& Coldest Beer in Town**
**CONVENIENT
DRIVE-THRU!**



Hours: Monday–Saturday 9AM to 10PM; Sunday Noon to 8:30PM

Owners: Tonya & Wade Christensen

623 W. Main St., Newcastle WY • 307-746-2693

capnbottle@rtconnect.net

Safe Travels



Hitting the Road >>

PROPANE:

Bring Your Own Bottle Fill-Ups

- Wesco Gas: 78 US Highway 450, Newcastle
- Upton Co-Op: 222 US Highway 16, Upton
- Short Stop: 2206 W. Main St., Newcastle

Bottle Exchange

- Wesco Gas: 78 US Highway 450, Newcastle
- Bomgaars: 205 Boyd Ave., Newcastle
- Short Stop: 2206 W. Main St., Newcastle
- YES WAY: 6 W. Main St., Newcastle
- Woody's Food Center: 622 W. Main St., Newcastle
- Newcastle Ace Hardware: 21 S. Railroad Ave., Newcastle
- Deckers Market: 701 Washington Blvd., Newcastle
- Gateway Travel Center: 5007 U.S. Hwy. 16, Newcastle
- Dollar General: 833 S. Summit Ave., Newcastle

SCENIC BYWAYS:

- **Wyoming Black Hills Scenic Byway:** Weston County
- **Peter Norbeck National Scenic Byway:** Needles Highway, Custer State Park Wildlife Loop & Iron Mountain Road, Custer State Park SD
- **Spearfish Canyon Scenic Byway:** Spearfish SD

SNOWMOBILING:

- **Black Hills National Forest:** fs.usda.gov/activity/blackhills/recreation; groomed trails can be found at Buckhorn, north of Newcastle on U.S. Hwy. 85



GATEWAY TRAVEL CENTER

Taco John's & Hot Stuff Pizza

Truck/RV Parking • Diesel
Cold Drinks • Ice • Propane
Coffee • ATM • WiFi
Gifts • Amenities

RV & CAMPGROUND SITES

Everything you need to keep on truckin'!

Convenience Store Hours: 5 a.m. to 10 p.m.

Taco John's Hours: 7 a.m. to 10 p.m.



Gateway Travel Center
307-746-2020
5007 U.S. Hwy. 16

AD PAID FOR IN PART BY WC TRAVEL COMMISSION

BUYING *or* SELLING *a home?*

LET'S WORK TOGETHER!

Buying or selling a home can be a stressful process if you don't have the right real estate agent. With years of experience, you can rely on me to get you the best possible result.



JULIE DOMINA
605.517.0379

WY & SD BROKER ASSOCIATE
128 W. Main St., Suite 1, Newcastle

AMERICAN & ITALIAN CUISINE PLUS SIGNATURE DRINKS

PIZZA, PASTA, CALZONES, SALADS, BURGERS & MORE!

CARRY OUT AVAILABLE

CALL 307-746-3500

DAILY LUNCH
SPECIALS



FULL BAR • HAPPY HOUR 3-5PM DAILY



12 S. SUMNER AVE . NEWCASTLE, WY . 307-746-3500
OPEN DAILY FROM 7AM TO 9 PM . SERVING BREAKFAST, LUNCH & DINNER

ENJOY ONE OF THE BEST PATIOS IN THE BLACK HILLS!

AD PAID FOR IN PART BY WESTON COUNTY TRAVEL COMMISSION

History

Venture into the past



Explore the area »

- **Old Town:** Historic rebuilding of Iron Town (1880s), located west of Upton off U.S. Hwy. 16. Interactive museum of historic cabins and buildings including a blacksmith shop, old fire hall, ice house, water tank, barn and corral, along with wagons & implements
- **Anna Miller Museum:** 401 Delaware, Newcastle, 307-746-4188. Named after Anna Celia McMoran Miller, daughter of pioneer family and widow of Sheriff Billy Miller. Complex includes one-room school house, homesteader's home, Jenney Stockade cabin, displays of pioneer & western history & more!
- **Red Onion Museum:** 1920 Hwy. 16 (Old Town), Upton 307-226-2873. Museum includes depictions of early settlers' lives, history of Upton, Indian artifacts & more!
- **Historic Buildings, Newcastle:** With numerous registries on the National Register of Historic Places, Newcastle features original sandstone buildings from the turn of the 20th century, an original Carnegie Library (still in use!), post office and more. Get your "Walk About Town" guide at the Visitor Center.



SCENIC/HISTORICAL TOURS:

- **Historic Stampede Street (Newcastle):** Brochures at Anna Miller Museum
- **Beaver Loop Tour (Newcastle):** Contact Newcastle Visitor Center (1323 Washington St., Newcastle) or Anna Miller Museum (401 Delaware, Newcastle)
- **Prairie to Pines Loop Tour (Upton):** Contact Upton Chamber, 723 2nd St., 468-2441





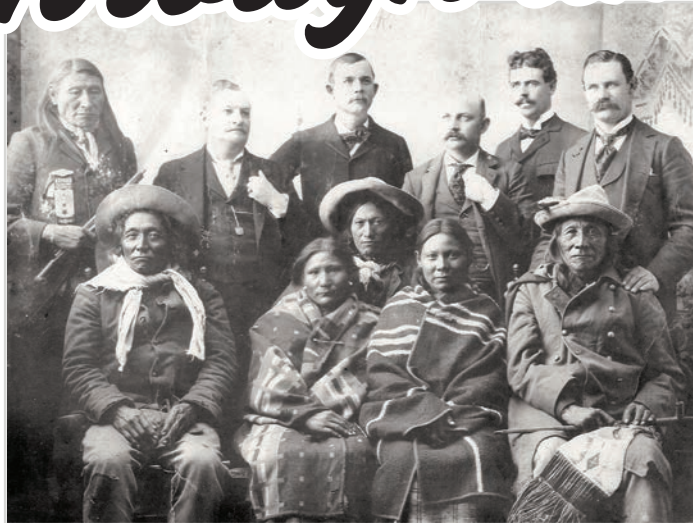
Take a trip Through time

W Wyoming. The Old West. These words conjure up visions of gun-slinging cowboys, saloon fights, encounters with Native Americans, and stagecoach robberies — tall tales. Or are they? Certainly not, in Weston County!

The country in and around Weston County was home to trail-blazers, settlers, gold and coal miners, railroad pioneers, and outlaws and peace-keepers (some of whom were both). Even Gen. George Armstrong Custer made his way through this area, as well as the Sioux tribesmen who delivered Custer and his men to the afterlife at the Little Big Horn Battlefield.

Take, for instance, Sheriff Johnny Owens, who was Weston County's first duly elected sheriff in 1892, and was also known by the moniker "The Gambling Sheriff." With a reputation for card playing and quick to the draw, some said that Owens was no better than the outlaws he hunted.

On the other side of the coin, perhaps, there's William



"Diamond L Slim" Clifton, a redheaded cowboy that worked his way west in the late 1800s, working as a hired ranch hand. Slim was hung by the neck in 1903 for allegedly killing a homesteader couple — his confession remains a point of contention. While Slim was awaiting trial a rowdy group of vigilantes "removed" Slim from the jail and lynched him from a bridge near the railroad tracks in what is now downtown Newcastle. Much to everyone's surprise, when Slim was pushed off the bridge, rope around his neck, his

head popped off, rolling down creek bank. A placard near the location on Main Street marks the approximate location of the hanging.

Women made their mark on the area as well. Jennie Ellis is one such lady who drove horses, ranched, wore overalls, ran a bootlegging operation, laid train track, and was every bit as unconventional for the time as history's better known female frontiersman, Martha "Calamity" Jane Cannary, who roamed the area some 30 years earlier.

More history abounds in Weston County. There's the Kilpatrick brothers, John, William and Robert, who together with Chester Collins created a coal enterprise and eventually founded the mining town of Cambria, north of present-day Newcastle. There's the stage hold-up of gold bullion in 1878 near Canyon Springs Station, which lead to an hours-long shoot-out and gold that was never recovered — and could still be out there!

Train wrecks, range wars, shoot-outs, and even a presi-

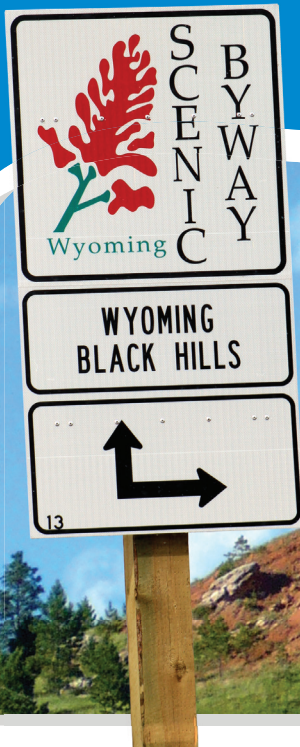
dential visit mark the history of Weston County. Find out more by visiting either of the two local museums, the Anna Miller Museum in Newcastle or the Red Onion Museum at Old Town in Upton. Take a walking tour in downtown Newcastle, or drive one of the two historic loop tours, the Prairie to Pines Loop tour in Upton or the Beaver Creek Loop Tour in Newcastle. Historical brochures can also be found at the museums, the office of the News Letter Journal on Newcastle's Main Street, or the Newcastle Visitors' Center at 1323 Washington Blvd., Newcastle (307-746-2739).

Events celebrating the area's culture and history are held throughout the year as well. Check out Living History Days, Upton Fun Days, the Weston County Fair, Fall Festivals in both Newcastle and Upton — or stop in for an old-fashioned Farmers' Market on Thursdays in the summer. While you are in town, check the local newspapers for event information.



Scenic

Byway



Located along the foothills of the Black Hills, Weston County offers the picturesque beauty of grasslands, forest, rolling prairies and abundant wildlife. That natural splendor is now recognized for all that it offers, with the Wyoming Black Hills Scenic Byway listed among scenic byways in the United States.

The Byway route covers a total of 78 miles in Weston County, looping from the Weston/Crook County line on Wyoming Highway 585 to the intersection of U.S. 85 at Four Corners, traveling south to the junction of U.S. 16 at Newcastle, west on 16 to Upton, then north again on Highway 116 to the Weston/Crook County line, just short of Sundance.

Proposed by the Weston County Travel Commission, the Wyoming Black Hills Scenic Byway was approved in April of 2012. The desire of the Commission is that Crook County will do likewise for the portions of highways 116 and 585 that enter their county, completing the loop with Interstate 90.



How to get there

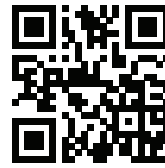


- Starting on WYO 585 at the Weston/Crook County Line, travel southeast.
- When WYO 585 intersects with U.S. Hwy. 85 at Four Corners, turn south onto U.S. Hwy. 85.
- Continue on U.S. Hwy. 85 until it intersects with U.S. Hwy. 16.
- Turn right, or west, onto U.S. Hwy. 16 or Washington Blvd.
- Turn right onto S. Summit Avenue through Newcastle.
- Turn left onto W. Main Street heading south.
- Stay on W. Main Street or U.S. Hwy. 16 and travel through Thunder Basin National Grassland to the city of Upton.
- In Upton, either continue northwest on U.S. Hwy. 16, or turn north onto WYO 116 and continue on either section of the byway until the end of the Thunder Basin National Grassland where the byway ends.

Find out more at wyomingtourism.org

Weston COUNTY

wideopenweston.com
instagram.com/wideopenweston



ENJOY THE VIEWS FROM HERE



RED BUTTE



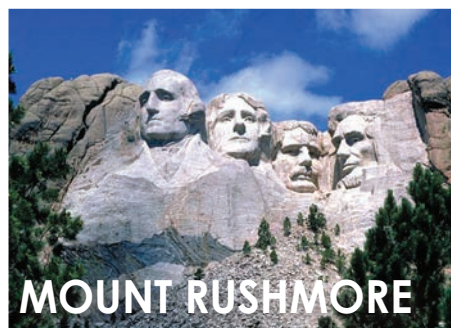
WESTON COUNTY
COURTHOUSE



UPTON OLD TOWN



CRAZY HORSE



MOUNT RUSHMORE

Endless vistas, meandering trails, picturesque sunsets, rolling plains, intriguing wildlife and pine-clad forests are just some of the highlights you'll find in wide-open Weston County.

If you're looking for an escape from the hustle and bustle of everyday life, the search is over. Here, you'll be treated like family, greeted with a warm smile and leave with memories that last a lifetime.

Weston County is the perfect launching pad for your next adventure, with ideal access to both the northern and southern Black Hills. The Northern Hills is home to Historic Deadwood, Devils Tower National Monument and Spearfish Canyon Scenic Byway. The southern hills features Mount Rushmore National Monument, Crazy Horse Memorial and Custer State Park.

During the day, explore everything the area has to offer and at night, relax, escape all the crowds, become one with nature and get lost in the stars.

What are you waiting for? Wide open Weston County is waiting with open arms.



FLYING V



DEVILS TOWER



NEWCASTLE



BUCKHORN

CAMPGROUNDS & RV PARKS:

AUTO INN (GOOD SAM)	877-2-AUTO INN
C-MART RV PARK	307-629-1231
FLYING V CAMBRIA INN	307-746-2096
GATEWAY TRAVEL CENTER	307-746-2020
MALLO CAMP	307-746-4094
SHORT STOP RV PARK	307-746-9775

BED & BREAKFAST:

FLYING V CAMBRIA INN	307-746-2096
FOUR CORNERS COUNTRY INN	800-890-4776

LODGING:

AUTO INN (AAA)	877-2-AUTO INN
HILLTOP (AARP)	307-746-4494
IRON CREEK INN & SUITES	307-468-2300
MALLO	307-746-4094
NEWCASTLE LODGE	
& CONVENTION CENTER	307-746-2600
PINES COUNTRY INN	800-946-4334
ROADSIDE	307-746-3123
SAGE (AAA)	877-746-2724
SUNDOWNER	307-746-3344
SUPER 8 BY WYNDHAM	307-746-4426

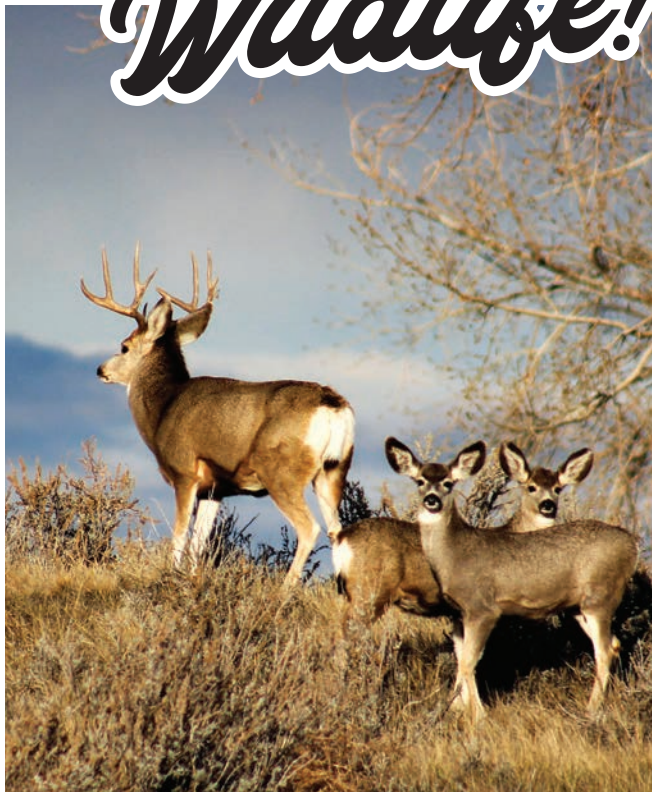
GAS STATIONS:

ARROW	307-468-2340
GATEWAY TRAVEL CENTER	307-746-2020
JOE'S FOOD CENTER	307-468-2372
LOAF 'N JUG	307-746-4080
MAVERIK	307-746-2433
SHORT STOP	307-746-9775
UPTON CO-OP	307-468-2489
YESWAY	307-746-9383

«« This page brought to you by the Weston County Travel Commission »»

«« Newcastle, Osage, and Upton Wyoming »»

Local *Wildlife!*



Photos by Nicky Greenewald



You won't have to look far to see the Old West in Weston County — cattle, cowboys and cowgirls, and the values instilled in generations of ranchers is alive and well. But, if you look a

little closer you will also see a people that are at one with nature, and there are plenty of hidden treasures in the area's vast grasslands, rolling hills and high desert. Right away you will likely encounter deer

that make their home among the sage-covered landscape. Antelope, too, can often be seen from the road, and occasional elk. There are also the critters seen less often, such as a wide variety of birds,

amphibians, fox, raccoon and snakes — watch out for the rattlers!

We hope you get the opportunity to see some of the wildlife of Weston County during your visit!

In 2015 our founder had a vision to recreate fast food. He did just that. **GRAZERS PRIDES ITSELF ON FRESH, NEVER FROZEN BURGERS.**

Our goal is to provide a fast and delicious meal experience for busy people just like you. Sink your teeth into Grazer's fresh, never frozen burgers and add on a side of homemade french fries or chips made from real potatoes. Dress your sandwich up with all the fixings and pile all of your favorite extras on top.

Pair our mouth-watering burgers with one (or more!) of the 12 beers the restaurant always has on tap. Take a piece of us home with you, and we don't mean a to-go order. Our "I Grazed at Grazers" T-shirts are the perfect souvenir for any hungry traveler.

Open daily, from 11 a.m. to 10 p.m. For take-out orders, call 307-746-2255.



Located at Newcastle Lodge & Convention Center | 22918 U.S. Hwy 85, Newcastle WY | 307-746-2255

Come on down to the Strawberry Patch!

We offer a great variety of 108, Minke, flannel and cotton fabric. We offer classes from beginner to experienced — or get your friends together and have a sewing weekend.

This shop is run by a mother and daughter dynamic duo who won't charge for the comedy act while shopping at their store.

We are worth the drive!



Strawberry Patch Quilt Shop

& Little Seed Longarm Services
210 W. Main St., Newcastle • (307) 746-3116

Weston County Welcome Guide ©2024



26 South Seneca
Newcastle WY
307-746-2706
a1agency.net



Diana Douglas-Turner/Sales Associate, Shawnda Sandrini Broker/Owner,
Jim Perino/Associate Broker, Valerie Pollat/Associate Broker

HELPING YOU IS OUR BUSINESS

Faith

& Fellowship



Local Churches



- **Assembly of God Church:** 216 S. Seneca, Newcastle 307-746-2249
- **Assembly of God Church:** 1320 Church St., Upton 307-468-2501
- **Baha'i Faith:** 15 Skyview Dr., Newcastle 307-746-3626
- **Cambria Community Church:** 19 Stampede St., Newcastle 307-746-2321
- **Christ Church Episcopal:** 310 S. Summit, Newcastle 307-746-9684
- **Christ the King Lutheran Church:** 224 W. Rd., Newcastle 307-746-2415
- **Church of Jesus Christ of Latter Day Saints:** 120 Ash, Newcastle 307-746-4131
- **Church on the Hill:** 301 Delaware, Newcastle 307-746-9663
- **Corpus Christi Catholic Church:** 19 W. Winthrop, Newcastle 307-746-4219
- **Country Church:** Four Corners, 307-746-9712
- **First Baptist Church:** 903 S. Summit, Newcastle 307-746-2188
- **First United Methodist Church:** 23 N. Seneca, Newcastle 307-746-4119
- **Gateway Fellowship:** 12 Old Hwy. 85, Newcastle 307-746-8091
- **Kingdom Hall of Jehovah's Witnesses:** 5018 US Hwy. 16, Newcastle 307-746-2319.
- **Newcastle Foursquare Church:** 1525 S. Summit, Newcastle 307-746-3618
- **Osage Community Bible Church:** 348 Sheridan St., Osage 307-465-2341
- **Seventh-Day Adventist:** 78 Old Hwy. 85, Newcastle 307-746-3504
- **St. Anthony's Catholic Church:** 610 Juniper St., Upton 307-746-4219
- **Upton United Methodist Church:** 834 Pine St., Upton 307-468-9302

“Have I not commanded you? Be strong and courageous. Do not be frightened, and do not be dismayed, for the Lord your God is with you wherever you go.”

Joshua 1:9

“And people will come from east and west, and from north and south, and recline at the table in the kingdom of God.”

Luke 13:29

Have an amazing journey!

HOWDY BAKERY

Fresh-baked Daily

Pies • Cookies • Breads • Preserves/Jams/Jellies • Bulk Foods

THE BEST DOUGHNUTS IN TOWN!



Hours: Thursday 8–6, Friday 8–6, Saturday 8–4
Every Friday in the summer, 1–6PM at the Farmers' Market
834 S. Summit Ave., Newcastle, WY 82701
307-941-0962

Weston County Library

— Since 1911 —

NOSTALGIA + PROGRESS

Enjoy a piece of history, with today's technology



**FREE WI-FI • BOOKS • MOVIES
PUBLIC COMPUTERS • MAGAZINES
DATABASES • CHILDREN'S LIBRARY**



There were 16 Carnegie libraries built in Wyoming between 1899 and 1917. Today, only 10 Carnegie libraries remain standing in Wyoming. Weston County Library is one of 5 that are still used as libraries. The Carnegie grant to build Weston County Library was for \$12,500. The library was completed in 1911 and dedicated in 1912.

LOCATED IN HISTORIC DOWNTOWN NEWCASTLE!

WESTON COUNTY LIBRARY ☞ 23 WEST MAIN STREET, NEWCASTLE, WY 82701 ☞
(307) 746-2206 ☞ HOURS ARE MONDAY THROUGH FRIDAY, 9 A.M. TO 5:30 P.M.
UPTON BRANCH: 722 4TH STREET, UPTON, WY, (307) 468-2324



**Motel • Campground • Internet
Showers • On-site Laundry
Full Hookups • Pet Friendly**



2503 W. Main (US Hwy 16 West) • (307) 746-2734 • autoinnwy.com

Ad paid for in part by Weston County Travel Commission

More!

Activities & Organizations



Plenty to do

Get connected!



- **Newcastle Area Chamber of Commerce/Visitor Center:** 1323 Washington Blvd. (U.S. Hwy 16), 307-746-2739, newcastlewyo.com, information & calendar of events
- **Upton Chamber of Commerce:** 723 2nd St., 307-468-2441, uptonwy.com, tourist information, business directory, calendar of events
- **Weston County Senior Services Center:** Daily meals, Friday cinnamon rolls, monthly dances, health services, community garden, transportation, recreation, 627 Pine St., Newcastle, 307-746-4903, wcsc.org
- **Weston County Sportsman's Club:** Gun show in March; indoor & outdoor shooting range, Dan, 307-746-4010
- **Newcastle Lodge No. 13, AF&AM Masonic Lodge:** 1440 W. Main St., Newcastle
- **Upton Lodge No. 38, AF&AM Masonic Lodge:** 307-468-2248
- **VFW Post No. 2516:** 2990 W. Main St., Newcastle, 307-746-9533
- **American Legion Post No. 3:** At VFW
- **Cambria Bowhunters of Wyoming:** Indoor leagues, 3D shoots, tournaments, Cambria Bowhunters of Wyoming-Facebook, cambriabowhunters@hotmail.com
- **Mondell Field Airport:** 4206 U.S. Hwy. 16 (west of Newcastle), 307-746-4666
- **Weston County Arts Council:** [facebook.com/Weston-County-Arts-Council](https://www.facebook.com/Weston-County-Arts-Council), 746-4623, tavoss2@msn.com
- **Weston County Concert Association:** Local nonprofit bringing concerts to Newcastle,



- [facebook.com/westoncountyconcertassociation](https://www.facebook.com/westoncountyconcertassociation)
- **Ball Games:** Take in a game! Ball fields are located off Birch St, in Newcastle (Hwy. 16 through town to Carter Ave., then to Birch). In Upton, Schiller Baseball Complex at 401 2nd St.
- **High School Sporting Events:** Football field, soccer fields at Newcastle High School, off U.S. Hwy. 16 Bypass
- **Art Shows:** Local artists featured monthly at Weston County Library, 23 W. Main St., Newcastle, 307-746-2206
- **Newcastle Community Recreation:** Recreation opportunities including Bent Sprockets Bicycle Club races, 307-746-6924
- **Bingo:** Fridays at 5:30 PM., VFW Post No. 2516, 2990 W. Main St., Newcastle, 307-746-9533
- **Dances:** Last Friday of the month at Weston County Senior Services Center, 627 Pine St., Newcastle
- **Crouch Auditorium:** Venue for concerts & plays, located at Newcastle High School, 111 Casper Ave. (off U.S. Hwy. 16 Bypass)
- **Kozisek Aquatic Center:** Open Swim, 116 Casper Ave. (off U.S. Hwy. 16 Bypass), 307-746-4850, Newcastle (by Newcastle High School)
- **Upton Swimming Pool:** Outdoor Pool, 802 Willow St., Upton, 307-468-2850

**Note: This list is not all-inclusive*



Hours: Mon.-Sat. 7AM-8PM, Sun. 8AM-7PM

Always Save Best Choice Clearly Organic



- ✓ Choice Meats
- ✓ Greeting Cards
- ✓ Bagged Ice
- ✓ Dry Ice
- ✓ Beverages & Snacks
- ✓ Full-Service Deli
- ✓ Postage Stamps
- ✓ Large Parking Lot
- ✓ Cigarettes & Tobacco

WE DELIVER GROCERIES TUES & WED!



"GET YOUR GOODIES AT WOODY'S!"
Fast & Friendly Service

WOODY'S
FOOD CENTER

622 W. Main • Newcastle WY
(307) 746-3511 • Fax (307) 746-3512
www.woodyfood.com

THERAPY SERVICES

Physical Therapy • Occupational Therapy • Respiratory Therapy • Speech Therapy • Cardiac Rehabilitation



Full-service Pharmacy on Premises – Drive-up Too!

WESTON COUNTY MANOR

24-Hour Long-term Nursing Home Facility.
58 beds, plus Special Care Unit.

HOME HEALTH

Providing Skilled Home Health Care

VISIT US AT WCHS-WY.ORG FOR MORE INFORMATION!



1124 Washington Blvd.
Newcastle WY 82701 | wchs-wy.org
Hospital 746-4491 | Manor 746-2793
Therapy Services 746-3720
Home Health 746-3553
Pharmacy 746-2425



Walk-In Clinic
1121 Washington Blvd.,
Newcastle
(307) 746-6720



717 Pine St., Upton
(307) 468-2302
Upton Pharmacy
(307) 746-3775

EMERGENCY SERVICES 24/7

Go take a Hike

Riders welcome, too!

If you love the outdoors, you will love Weston County! The area boasts four trails designed for hiking, mountain biking and for adaptive riders.

The Serenity Trail is located three miles north of Newcastle from the intersection of U.S. Highways 16 and 85, off 85, and consists of either two- or four-mile loops. These family friendly trails wind through wildlife trails into a canyon, crossing a spring-fed bottom. Minutes from town, you will

enjoy the peace and the 'serenity' of this trail.

Continuing toward Deadwood on U.S. Highway 85, The Flying V Trail system is located eight miles north of the intersection and consists of more than 17 miles of single track and wider trails. Named after the nearby historic Flying V Inn, this system features beginner, intermediate and advanced level trails. Here, cyclists yield to hikers, but everyone yields to cows!

Check out the overlook at Mallo Trail! This fun trail is just beyond Mallo Camp, about 20 miles north of Newcastle, also off U.S. Highway 85 (look for the signs to Mallo on the right).

The newest trail system in Weston County is Old Quarry Trail, located eight miles east of Newcastle, off Highway 16, with five miles of trails that range from 40 to 60 inches wide. When other trails are muddy, this one will be dry —

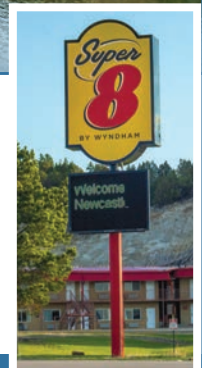


during the hot summer months, go early in the day, or later in the afternoon though.

Tear-off trail maps and trail brochures can be found at local businesses, the Newcastle Area Chamber of Commerce, the Anna Miller Museum, or the News Letter Journal. Find out more at Bentsprocketswy.org.



60 Rooms • Pet Friendly • Kitchenettes
Lounge • WiFi & Satellite TV
Free Parking • Laundry
Continental Breakfast



Junction of U.S. Highways 16 & 85 • 307-746-4426



Tourist information



trail maps

stickers

post cards

News Letter Journal • 307-746-2777
14 W. Main St, Newcastle, WY 82701

BIG-CITY INVENTORY *Hometown Prices*

Tony Lama Boots • Western Wear • FR Clothing
Cowboy Hats, Belts & Belt Buckles • Cowgirl Tuff & Cinch Jeans
Women's Clothing & Accessories • Gifts For All Ages
Tuxedo Rentals & Prom Gowns • Thompson's Candles



*Official NFL Memorabilia,
Ball Caps, Scarves & Glassware!*



115 W. Main Street
Downtown Newcastle, WY
307-746-3165
Hours: Mon.-Fri. 10AM-6PM
Th. 10AM-8PM, Sat. Seasonal
Closed Sunday

PIZZA BARN

Great Food, Family & Friends



Steak • Salad Bar • Pasta • Burgers

66 Old U.S. Hwy. 85, Newcastle WY • 307-746-2874

Welcome to Upton!



New! Fresh Burritos, Bowls & Nachos Made Daily!



At **ARROW SERVICE**, we have everything you need!

Convenience Store • Great Coffee & CLEAN Restrooms!
Gasoline & Diesel • Ethanol-free Premium Fuel
Lottery • Ready Mix Concrete

307-468-2340 • 1002 E. 2nd St., Upton WY

Ad paid for in part by Weston County Travel Commission



Red Onion *MUSEUM* UPTON, WYOMING

RED ONION SALOON

THE RED ONION MUSEUM WAS NAMED ON AN OLD HISTORIC SALOON IN UPTON. THE RED ONION SALOON WAS OWNED BY WALKER GARDNER PULSON, A 26 YEAR UPTON RESIDENT. THE SALOON WAS A SUCCESS BECAUSE IT ALLOWED NO BOOTLEGGING OF LIQUOR DURING THE PROHIBITION YEARS!

Features include two-headed calf, early businesses, pioneer history, wagon display and much more!



A must-see collection of Western & Pioneer History

1920 U.S. Hwy. 16 @ Old Town, Upton, Wyoming
(307) 226-2873 • email: redonion@gmail.com

Remy's Diner

A little place with a **GREAT BIG TASTE**

FULL MENU

Breakfast • Lunch • Dinner

HOMEMADE HASH BROWNS!



WE'VE GOT MILKSHAKES! 50+ Flavors



HOURS

MON-SAT: 7AM to 9PM • SUN: 7AM TO 2PM

307-468-2266

1019 US-16, Upton, WY 82730 • On U.S. Hwy. 16 route to Devils Tower & Mount Rushmore

- Donuts • Full Service Deli •
- Broasted Chicken •

JOE'S Food Center

Well known for our fresh donuts, hand-made daily!

Full Service Meat Department

Fresh, Hand-cut Special Orders

Full Produce Section

Weekly Specials

- Hunting & Fishing Licenses
- Fuel Pumps
- Bulk Ice

CUP O' JOE



COFFEE SHOP ESPRESSO BASED DRINKS

Mon-Sat 7am-8pm
Sun 9am-6pm

519 W. Highway 16
Upton WY 82730
(307) 468-2372

joesfoodcenter.com

Check out our Murals!

Whether you are walking or driving, be sure to stop and admire the murals throughout Newcastle and Upton, all created by local talent!



» SUPPLIES

- Paper & Envelopes
- Flash Drives
- Camera Cards
- Staples & Paper Clips
- Binders
- Receipt Books
- Calendars



WHEN YOUR BUSINESS IS ON THE ROAD »

» SERVICES

- FAX: Sending or Receiving
- Print from Email
- Scan & Email
- Email to Print
- Color & BW Copies

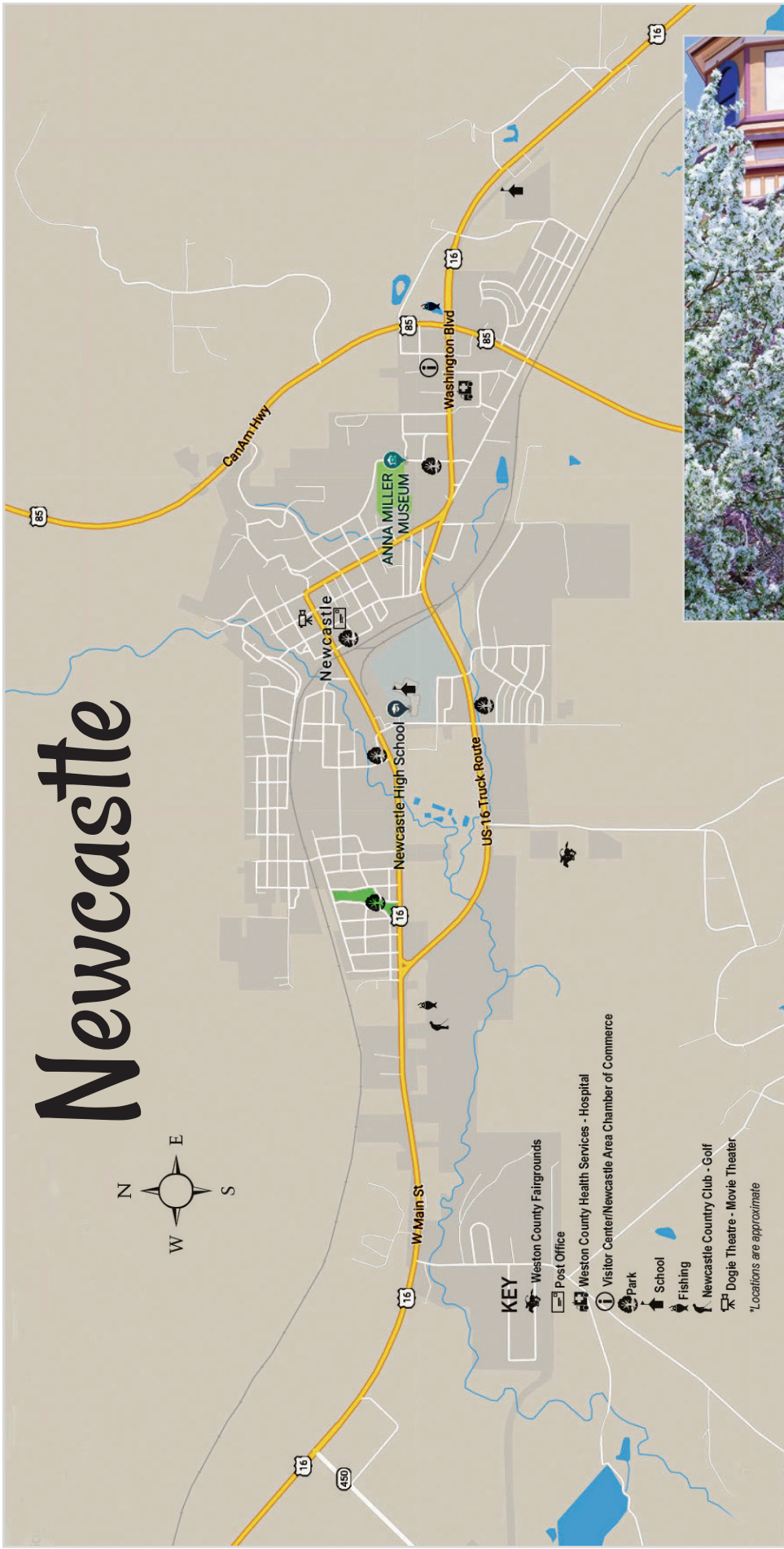
WE'VE GOT YOU COVERED!

Stop in or call & our friendly staff will help you out

FREE COFFEE WHILE YOU WAIT!

News Letter Journal • Bringing News to Weston County Since 1889

307-746-2777 | 14 W. Main St., Newcastle WY 82701 | FAX: 307-746-2660 | email: sales@newslj.com



Newcastle

Newcastle

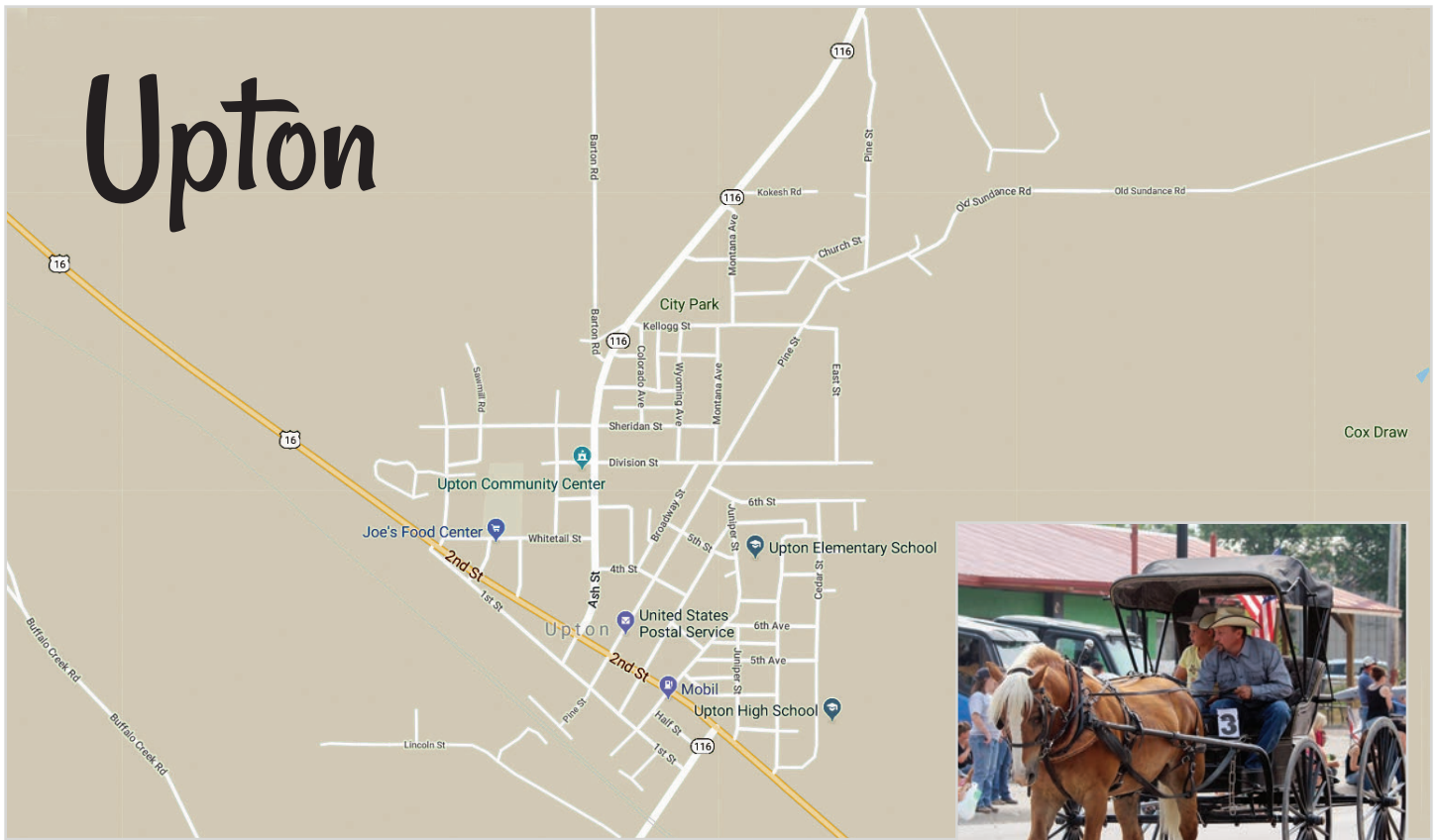
Population (2020 Census): 3,374
Elevation: 4,327 feet
Land area: 2.47 square miles.
Average high: 76; **average low:** 25
Median age: 35.3 (2022)
 (Wyoming median age: 38.5 in 2022)
Zip code: 82701
Latitude: 43.85 N, **Longitude:** 104.21 W
Area code (Wyoming): 307

The local newspaper is the News Letter Journal. The City of Newcastle, WY, was made official in 1889, with the county of Weston splitting from Crook County the following year. Newcastle is the county seat. With a population of approximately 3,400, the city has many amenities of a larger city, yet maintains a friendly, small-town atmosphere.

There are three schools in the city as well as an aquatic center. The high school and grade school were completed in 2002.

An active chamber of commerce and retail association provide business opportunities. Compared to other areas in Wyoming, Newcastle has a relative low cost of living.

Newcastle literally sits on the edge of the Black Hills Uplift, nestling in a terrace between limbs of the Black Hills Monocline, with the hard Newcastle Sandstone prominently displayed on the hogback ridge to the north, and the gentler ridge to the south capped by erosion resistant limestone beds, rich in small marine shells and shark teeth, of the Greenhorn Formation. In between lie the softer, dark-grey Mowery and Belle Fourche Shales, of middle cretaceous age, about 100 million years old, upon which the city is built.



*Maps are not to scale, and are not all-inclusive



Weston County

Population (2020 Census): 6,838
Median Age: 43.1
Land area: 2,398 square miles

Recreation in the area includes hunting, fishing, geocaching, snowmobiling and hiking in the adjacent Black Hills. Weston County's history is true "wild west" lore: The Cheyenne-Deadwood Stage Trail crosses through the county; cattle rustlers made their home here and undesirables like "Diamond Slim" were hung here; it was the site of the "Last Indian Battle;" and one county law enforcement officer was known as "The Gambler Sheriff." The area was also visited by famous people, like President Teddy Roosevelt in 1903.

Upton

Population (2020 census): 898
Elevation: 4,239 feet
Median age: 50.4 (2022)
Zip code: 82730
Land area: 1.31 square miles
 Upton is 187 miles from Casper, WY;
 110 miles from Rapid City, SD;
 and 367 miles from Denver, CO.
 The local newspaper is the
 Weston County Gazette.



Weston County Welcome Guide ©2024

Osage

Population (2020 census): 151
Median age: 45.5 (2019)
Zip code: 82723
Elevation: 4,925 feet
Land area: 1.94 square miles.



LAK RESERVOIR



SHINE & SHOW



RPM DAYS



RODEO



UPTON FUN DAYS



MADNESS ON MAIN